

The MiniMc Series offers the smallest, most reliable and most cost-effective switching 10/100 Mbps and Gigabit media converters in the industry.

## Features and Benefits

The most cost-effective fiber converters available today

- Quality product made in America
- Low cost
- Giga-MiniMc connects 10/100/1000 Mbps copper to 1000 Mbps fiber
- 10/100 Mbps Switching MiniMc connects 10/100 Mbps copper to 100 Mbps fiber
- MiniMc-Gigabit converts 1000 Mbps copper to 1000 Mbps fiber
- 6-year warranty on all converters and power adapter

### Plug-and-Play Operation

- User-friendly 10/100 Mbps or 10/100/1000 Mbps auto-negotiation technology on switching MiniMcs
- AutoCross feature for twisted pair connection on all converters

### Perfect for a variety of applications

- Standalone MiniMc includes country-specific, high-reliability AC power adapter or power the MiniMc with a USB-power cord (10/100 Mbps switching models only)
- Available for multi-mode fiber, single-mode fiber, and single-strand fiber

### Space saving alternative

- Standalone unit has small, rugged enclosure with compact, external AC power adapter
- 18 connections in the 1.5U high IE-PowerTray/18 rackmountable enclosure

### All versions include:

- Auto-Cross automatic selection between crossover and straight-through cable
- Status LEDs

## Application Example

As a standalone unit, install *MiniMc* virtually anywhere, even areas where space is extremely limited. For applications requiring hundreds of connections, install *MiniMcs* in several of the very high-density *IE-PowerTray/18* enclosures each of which allows 18 conversions in only 1.5 rack units of space.



Media conversion is the most cost-effective solution for extending the productive life of legacy wiring plants and equipment while allowing implementation of new technologies. Media conversion's greatest benefits are flexibility and cost savings. However, with networks constantly growing and projects increasing in scope, even reasonably-priced media converters can tack on a substantial sum to networking costs. Space constraints can also be an issue when hundreds of conversions are required.

IMC Networks once again has the solution. Measuring less than 3.5 inches deep and 2 inches wide, MiniMc is the industry's smallest media converter with both data connections on the same side of the unit, and MiniMc is a fraction of the cost of other alternatives. The series features a variety of 10/100 and Gigabit versions.

### MiniMc includes:

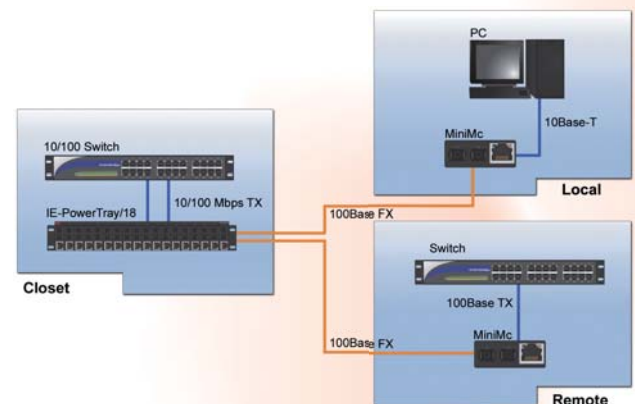
- One 100 Mbps FDX fiber port
- One 10/100 Base-TX twisted pair port that auto-senses the connected device's rate and duplex mode (Half-Duplex/Full-Duplex)

### MiniMc-Gigabit includes:

- One 1000Base-SX or 1000Base-LX fiber port
- One 1000Base-T twisted pair port

### Giga-MiniMc includes:

- One 1000Base-SX or 1000Base-LX fiber port
- One 10/100/1000 Mbps twisted pair port that auto-senses the connected device's speed and duplex mode (Half-Duplex/Full-Duplex)



MEDIA CONVERSION

# Technical Specifications

- Plug-and-play operation
- RJ-45, and ST or SC connectors available (ST connectors not offered for Gigabit speeds)
- 50/125µm or 62.5/125µm multi-mode fiber
- 9/125µm single-mode fiber
- IEEE 802.3 10Base-T twisted pair
- IEEE 802.3u 100Base-TX twisted pair
- Available with single-strand fiber support
- Country-specific, high-reliability power adapter
- Auto-Negotiation, Auto-Cross for MDI-II/MDI-X
- Layer 2 packet switching, store and forward (forwarding rate: 14,880 pps for 10 Mbps, 148,000 pps for 100 Mbps, 1,480,000 Mbps for 1000 Mbps)
- Broadcast storm protection
- Status LEDs

## Packets Supported:

- MiniMc: 1916 packets
- Giga-MiniMc: 1632 packets
- MiniMc-Gigabit: Unlimited

# Fiber Optics Specifications

For each product listed below in the Ordering Information section, the DISTANCE represents an approximate fiber distance based on industry-standard fiber attenuation specifications. Actual distances will vary for each installation. For complete power budgets and information on calculating specific distances, visit [www.imcnetworks.com/go/fcs](http://www.imcnetworks.com/go/fcs) or contact IMC Networks Fiber Consulting Services at 949-465-3000.

## Ordering Information

PART NUMBER	DESCRIPTION	DISTANCE
<b>MiniMc 10/100 *</b>		
855-10620	MiniMc, TP-TX/FX-MM850-ST	300 m
855-10621	MiniMc, TP-TX/FX-MM850-SC	300 m
855-10622	MiniMc, TP-TX/FX-MM1300-ST	2 km
855-10623	MiniMc, TP-TX/FX-MM1300-SC	2 km
855-10624	MiniMc, TP-TX/FX-SM1310/PLUS-ST	40 km
855-10625	MiniMc, TP-TX/FX-SM1310/PLUS-SC	40 km
855-10626	MiniMc, TP-TX/FX-SM1310/LONG-ST	80 km
855-10627	MiniMc, TP-TX/FX-SM1310/LONG-SC	80 km
855-10641	MiniMc, TP-TX/FX-SM1550/LONG-SC	80 km
<b>MiniMc 10/100 Single Strand Fiber * **</b>		
855-10650	MiniMc, TP-TX/SSFX-MM1310-SC	2 km
855-10651	MiniMc, TP-TX/SSFX-MM1550-SC	2 km
855-10652	MiniMc, TP-TX/SSFX-SM1310-SC	20 km
855-10653	MiniMc, TP-TX/SSFX-SM1550-SC	20 km
855-10654	MiniMc, TP-TX/SSFX-SM1310/PLUS-SC	40 km
855-10655	MiniMc, TP-TX/SSFX-SM1550/PLUS-SC	40 km
855-10656	MiniMc, TP-TX/SSFX-SM1310/LONG-SC	60 km
855-10657	MiniMc, TP-TX/SSFX-SM1550/LONG-SC	60 km

PART NUMBER	DESCRIPTION	DISTANCE
<b>Giga-MiniMc 10/100/1000 *</b>		
856-10730	Giga-MiniMc, TX/SX-MM850-SC	300 m
856-10731	Giga-MiniMc, TX/LX-SM1310-SC	15 km
856-10732	Giga-MiniMc, TX/LX-SM1310/PLUS-SC	40 km
856-10733	Giga-MiniMc, TX/LX-SM1550/LONG-SC	70 km
856-10729	Giga-MiniMc, TX/LX-SM1550/XLONG-SC	120 km
<b>Giga-MiniMc 10/100/1000 Single Strand Fiber * **</b>		
856-10734	Giga-MiniMc, TX/SSLX-SM1310 SC	10 km
856-10735	Giga-MiniMc, TX/SSLX-SM1550 SC	10 km
856-10736	Giga-MiniMc, TX/SSLX-SM1310/PLUS-SC	40 km
856-10737	Giga-MiniMc, TX/SSLX-SM1550/PLUS-SC	40 km
856-10738	Giga-MiniMc, TX/SSLX-SM1490/LONG-SC	60 km
856-10739	Giga-MiniMc, TX/SSLX-SM1550/LONG-SC	60 km
856-10740	Giga-MiniMc, TX/SSLX-SM1490/XLONG-SC	70 km
856-10741	Giga-MiniMc, TX/SSLX-SM1550/XLONG-SC	70 km

## Regulatory Approvals:

- FCC Class A
- UL/cUL, CSA, CE

## Dimensions:

0.83"H x 1.80"W x 3.35"D (2.11 x 4.57 x 8.51 cm)

## Shipping Weight:

0.7 lbs (.317 kg)

## Power Rating:

5V DC, 500mA

## Operating Temperature:

32° to 122° F (0° to 50° C); 5% to 90% (non-condensing),

## AC Adapter:

32° to 122° F (0° to 50° C) 0 to 10,000 ft. altitude

## Storage Temperature:

-13° to 158° F (-25° to 70° C); 5 to 90% (non-condensing)

## IE-PowerTray/18

- 18 slots for powering MiniMc, Giga-MiniMc, MiniMc-Gigabit, IE-MiniMc and IE-Giga-MiniMc fiber converters
- 1.5U high rack mountable enclosure

## Regulatory Approvals:

- FCC Class A
- UL/cUL, CSA, CE

## Dimensions

2.30"H x 16.97"W x 9.25"D (5.80 x 43.10 x 23.5 cm)

## Shipping Weight

10 lbs (4.5 kg)

## Power Information

AC Input Load: 100-240V AC, 50/60 Hz, 1.5A  
DC Input Load: -48V DC or -48/60V DC, 2A

## Operating Temperature

-4° to 158°F (-20° to +70°C)  
5% to 90% (non-condensing), 0 - 10,000 ft. altitude

## Storage Temperature

-13° to +158°F (-25° to +70°C)  
5 to 90% (non-condensing)

PART NUMBER	DESCRIPTION	DISTANCE
<b>MiniMc-Gigabit 1000</b>		
855-10730	MiniMc-Gigabit, TX/SX-MM850-SC	300 m
855-10731	MiniMc-Gigabit, TX/LX-SM1310-SC	15 km
855-10732	MiniMc-Gigabit, TX/LX-SM1310/PLUS-SC	40 km
855-10733	MiniMc-Gigabit, TX/LX-SM1550/LONG-SC	70 km
<b>MiniMc-Gigabit 1000 Single Strand Fiber **</b>		
855-10734	MiniMc-Gigabit, TX/SSLX-SM1310-SC	10 km
855-10735	MiniMc-Gigabit, TX/SSLX-SM1550-SC	10 km
855-10736	MiniMc-Gigabit, TX/SSLX-SM1310/PLUS-SC	40 km
855-10737	MiniMc-Gigabit, TX/SSLX-SM1550/PLUS-SC	40 km
855-10738	MiniMc-Gigabit, TX/SSLX-SM1510/LONG-SC	60 km
855-10739	MiniMc-Gigabit, TX/SSLX-SM1570/LONG-SC	60 km
855-10740	MiniMc-Gigabit, TX/SSLX-SM1510/XLONG-SC	70 km
855-10741	MiniMc-Gigabit, TX/SSLX-SM1570/XLONG-SC	70 km

PART NUMBER	DESCRIPTION
<b>IE-PowerTray/18</b>	
850-13086	IE-PowerTray/18-AC (1.5U high, Rackmountable Enclosure)
850-32088	IE-PowerTray/18-DC (1.5U high, Rackmountable Enclosure)
<b>MiniMc Series Accessories</b>	
806-39623	AC Power Adapter for MiniMc products (10 watt, 0°C to +50°C)
806-00322-00	USA Power Adapter Clip
806-00322-01	UK Power Adapter Clip
806-00322-02	Europe Power Adapter Clip
806-00322-03	Australia/NZ Power Adapter Clip
806-39628	USB Power Cable for MiniMc 10/100 Only

\* Modular versions without AC adapter, change the two Part Numbers after the 8 to 54. (i.e. 855-10620 becomes 854-10620)

\*\* These products have single-strand fiber technology. Deploy in pairs, or connect to another compatible IMC Networks single-strand fiber product. For more information go to: [www.imcnetworks.com/products/SSFX.cfm](http://www.imcnetworks.com/products/SSFX.cfm)



**IMC Networks**  
Headquarters  
19772 Pauling  
Foothill Ranch, CA 92610  
TEL: 949-465-3000  
FAX: 949-465-3020  
sales@imcnetworks.com  
www.imcnetworks.com

**IMC Networks**  
Europe  
Herseltsesteeuweg 268  
B-3200 Aarschot | Belgium  
TEL: +32-16-550880  
FAX: +32-16-550888  
eurosales@imcnetworks.com

**IMC Networks**  
Eastern US/Latin America  
18840 US Hwy. 19 North Suite 400  
Clearwater, FL 33764  
TEL: 727-524-8152/524-8071 (Latin)  
FAX: 727-524-8432  
latinsales@imcnetworks.com

**IMC Networks**  
Fiber Consulting Services  
For information call:  
TEL: 949-465-3000  
1-800-624-1070 (US/CAN)  
+32-16-550880 (Europe)  
fcs@imcnetworks.com

Copyright © 2007 IMC Networks. All rights reserved. The information in this document is subject to change without notice. IMC Networks assumes no responsibility for any errors that may appear in this document. Specific product names may be trademarks or registered trademarks and are the property of their respective companies.